



Blinds with people in mind

ATLANTEX

Vertical And Roller Blind Fabric Specification

ATLANTEX

Vertical And Roller Blind Fabric Specification

KEY FEATURES:

- Fabric composition:** 100% Polyester
- Fire retardancy:** EN 13773 : 2003 Class 1; BS5867 - 2, Type B : 2008 for fire retardancy when tested in accordance with BS5438 : 1989
- Shading:** Dim-out - Recommended for computer environments
- Moisture resistance:** Acticide coated - Recommended for moist conditions

STANDARD SPECIFICATIONS:

- Colour range:** 21
- Louvre widths available:** 89mm (3¹/₂"); 127mm (5")
- Roller fabric width:** 180cm (72") nominal
- Typical fabric weight:** 240gsm (+/- 25)
- Fabric thickness:** 0.50mm - nominal
- Colourfast:** Conforms to BS5867 - 1 : 2004 for light fastness to Grade 6 minimum when tested in accordance with ISO 105 - B02 : 1999
- Care instructions:** Wipe with damp sponge; Machine washable; Do not tumble dry; Do not dry clean; Do not iron

COLOUR	HEAT		LIGHT		S-C
	T	R	T	R	
Aubergine	3	22	0	13	0.68
Blue	8	45	3	39	0.49
Brown	3	30	1	26	0.61
Cherry	3	22	0	13	0.68
Chocolate	4	18	0	8	0.72
Clay	15	52	4	35	0.44
Coffee	3	30	1	26	0.62
Cream	19	71	19	80	0.28
Dk Beige	8	50	6	53	0.45
Dk Blue	5	26	0	10	0.65
Green	3	23	2	24	0.67
Lavender	14	62	6	53	0.35
Lime	10	46	8	34	0.48
Navy	5	26	0	9	0.65
Ochre	8	55	10	48	0.40
Olive	6	30	2	24	0.62
Silver	11	51	8	55	0.44
Terracotta	15	52	4	35	0.44
Vanilla	18	70	19	81	0.29
White	18	74	16	84	0.25
Yellow	18	62	18	73	0.35

T = % Transmitted : R = % Reflected : S-C = Shading Co-efficient. Shading Co-efficients are expressed as a decimal between 0 and 1. The lower the figure, the higher the shading efficiency of the blind.

This data is based on:
Tests conducted using double glazed 6mm float glass with 12mm air space. Blinds are fully closed.

Shading Co-efficients are calculated for radiation at normal incidence. Standard U value is 2.75 W/M 2k = 0.49Btu/ft2hx°F.

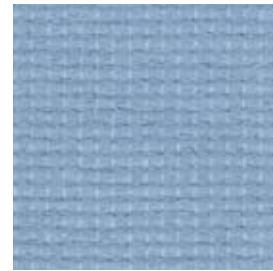
Important: Performance data has been compiled with great care using the latest techniques. However, it is advisable to check actual suitability of fabrics for a particular application before use.

In line with our commitment to product development, specifications may be subject to change without notice.

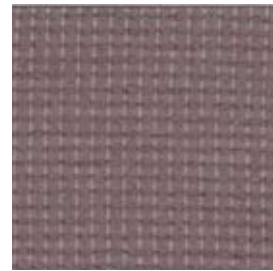




Aubergine



Blue



Brown



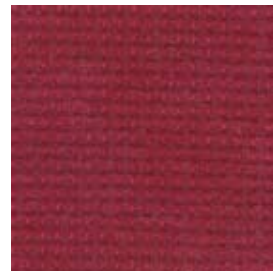
Lime



Navy



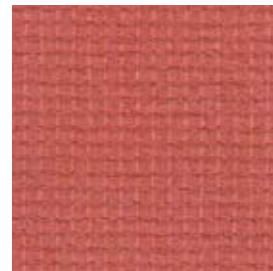
Ochre



Cherry



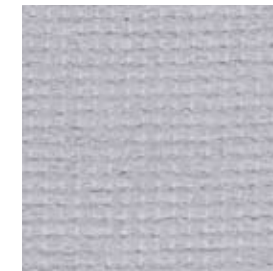
Chocolate



Clay



Olive



Silver



Terracotta



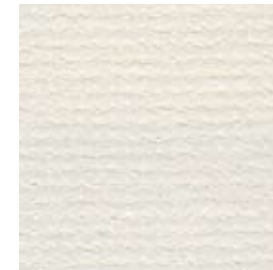
Coffee



Cream



Dark Beige



Vanilla



White



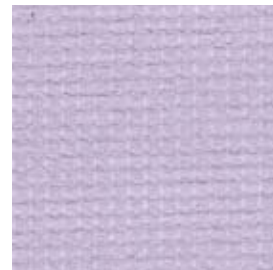
Yellow



Dark Blue



Green



Lavender